

## STUDENT PORTFOLIO



Alex Ramirez, *Self Portrait* (2018). Charcoal on paper, 16 by 20 inches. University of New Haven, Drawing I.



Mateusz Nodzewski, *Still Life* (2018). Acrylic on canvas board, 20 by 16 inches. University of New Haven, Painting I.



Madison Sanborn, *Bezold Color Exercise* (2015). Gouache on paper, 10 inches square. New Hampshire Institute of Art, Design II.



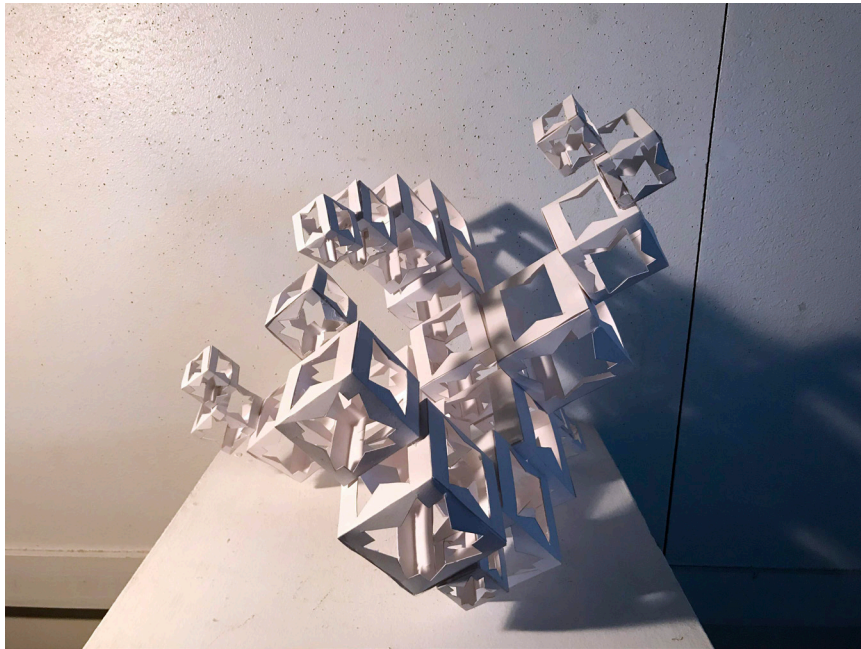
Adina Cosden, *Self-Portrait Series* (2015). Charcoal on paper, 22 x 30 inches. New Hampshire Institute of Art, Compositional Drawing.



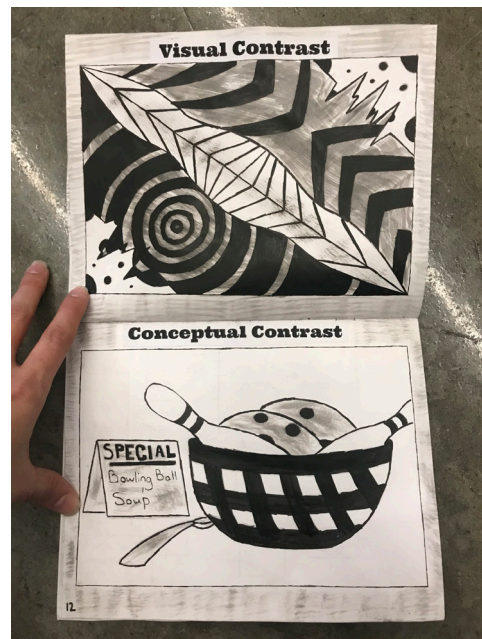
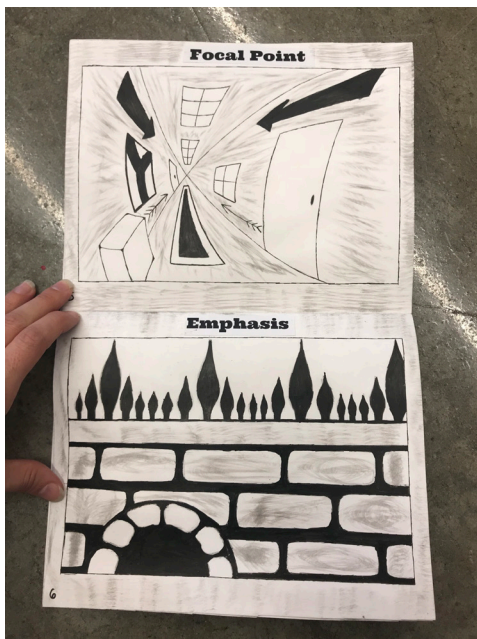
Claire Whall, *Feature Studies: Eyes and Mouths* (2015). Ink on paper, 11 x 14 inches (each). New Hampshire Institute of Art, Compositional Drawing.



*Body Modification Projects* (2019). Cardboard, dimensions variable. University of New Haven, 3D Design.



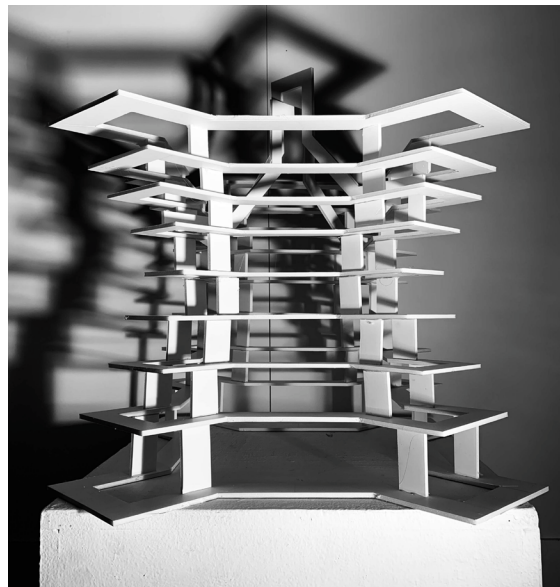
Seth Hennin, *Polyhedral Forms* (2020). Bristol board, approximately 24 inches by 24 inches by 24 inches. University of New Haven, 3D Design.



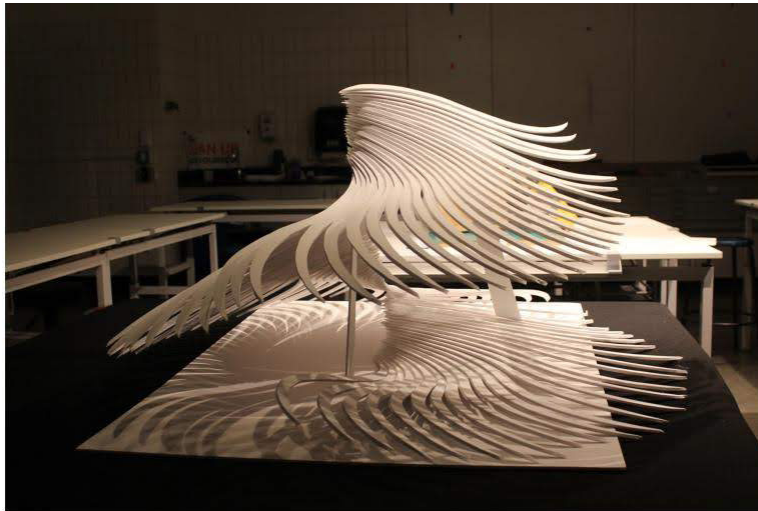
Roy Okena, *Composition Books* (2018); Ink and marker on paper, 8 by 6 inches (each). University of New Haven, Visual Thinking.



Katie Heinlein, *Duck and Cover* (2019). Quilted fabrics. University of New Haven, Senior Seminar.



John Demillo, *Serial Planes* (2020). Foam board and glue, approximately 24 by 24 by 24 inches. University of New Haven, 3D Design.



Jennifer Rezende, *Serial Planes* (2019). Foam board and glue, approximately 36 by 24 by 24 inches. University of New Haven, 3D Design.



Erin Bowen, *Fauve Landscape Copy* (2017). Acrylic paint on paper, 10 by 8 inches. Kingswood Oxford.



Jake Puff, *Scale Shift* (2020). Cardboard and glue, approximately 36 by 24 by 10 inches. University of New Haven, 3D Design.



Emily Powers, *Landscape Painting* (2018). Acrylic paint on canvas, 18 by 24 inches. University of New Haven, Painting I.



Matthew DiBlanda, *Positive/Negative Shape Project* (2019). Black paper on Bristol, approximately 14 by 17 inches. University of New Haven, Visual Thinking.



Marta Markiw, *Color Strategy Painting Series* (2017). Acrylic paint on matboard, 10 by 7 inches (each). University of New Haven, Visual Thinking.





Emily Powers, *Beetle* (2019). Acrylic paint on plexiglass, 12 by 14 inches. University of New Haven, Senior Seminar.



Anna Schlock, *Moving Still-Life Assignment* (2015). Charcola pencil on paper, 18 by 24 inches. New Hampshire Institute of Art, Compositional Drawing.



Katie Heinlein, Installation shots of *Beauty & Contempt* (2019). Senior Exhibition at the Ely Center of Contemporary Art, New Haven, CT.



Jonah Feintuck, *Double Portrait* (2016). Charcoal on paper, 32 by 40 inches, Framingham State University, Life Drawing.

# PROFESSIONAL PORTFOLIO



*Scroll XII* (2019). Acrylic paint on paper, approximately 42 by 198 inches.



*Scroll IX* (2016). Ink, gouache on paper, 42 by 198 inches.



*Scroll II* (2014). Ink, gouache on paper, 42 by 198 inches.



*Scroll VII* (2015). Acrylic paint on paper, approximately 42 by 198 inches.



*Paper Over II* (2017). Paint on paper, stapled to the wall, approximately 11 feet across and 6 feet tall. Site-specific installation for Ann Street Gallery, Newburgh, New York.



*Paper Over* (2017). Cut paper forms, dimensions variable. Crown Street Window Display. Artspace, New Haven. Photographer credit: Jessica Smolinski.



*Splice* (2018). Laser cut paper installation, dimensions variable. Constance Lavino  
Bell Library, Ethel Walker School, Simbury, Connecticut.



*Scroll I* (2014). Ink, gouache on paper, 3.5 by 30 feet. Installed outside the Institute  
Library, March 2017, New Haven, CT.



*Untitled (2017)*. Gouache on paper, 7.5 by 11.5 inches.



*Untitled (2017)*. Gouache on paper, 8.25 by 13.75 inches.



*Untitled (2019). Gouache on paper, 11.5 by 15.125 inches.*



*Untitled (2019). Gouache on paper, 11.5 by 15.125 inches.*





*Floozy* (2019). Laser cut paper and mat board, approximately 18 inches square.



*Harpy* (2019). Laser cut paper and mat board, approximately 18 inches square.



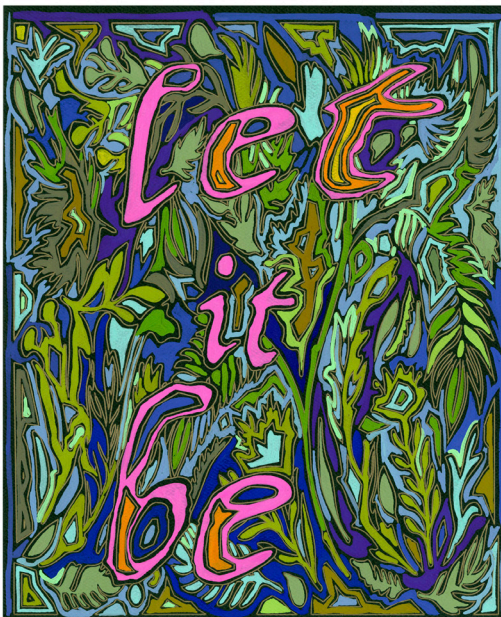
*Shrill* (2019). Laser cut paper and mat board, approximately 18 inches square.



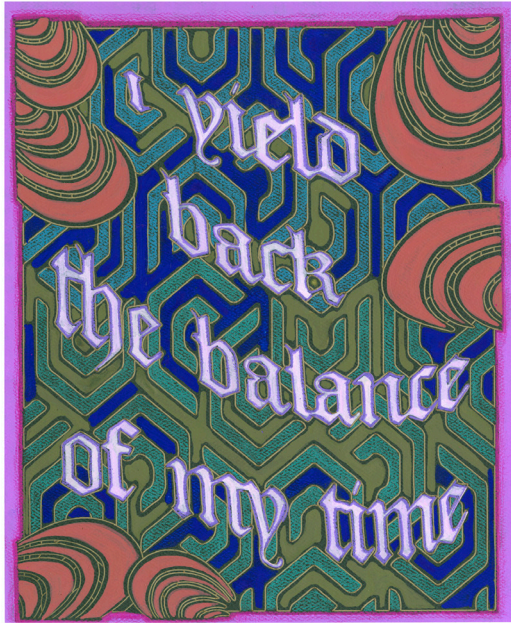
*Frigid* (2019). Laser cut paper and mat board, approximately 18 inches square.



*yes yes yes yes yes* (2022). Gouache and color pencil on laser-etched paper, approximately 9 by 11 inches.



*let it be* (2022). Gouache and color pencil on laser-etched paper, approximately 9 by 11 inches.



*i yield back the balance of my time* (2022). Gouache and color pencil on laser-etched paper, approximately 9 by 11 inches.



*same same* (2022). Gouache on laser-etched paper, approximately 9 by 11 inches.